

# REVERSIBLE • DURABLE • UNIVERSAL



**COTECH**



89, Villeray Street, L'Isle-Verte

1 800 898-4440

 [www.cotech.ca](http://www.cotech.ca)

EXCAVATION  
ATTACHMENTS

•  
BUCKETS

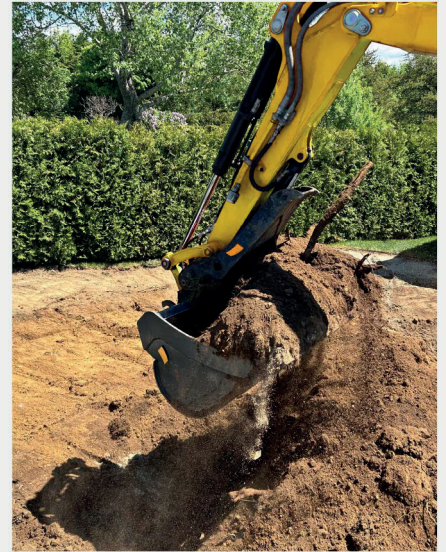
••  
THUMBS

•••  
COUPLERS



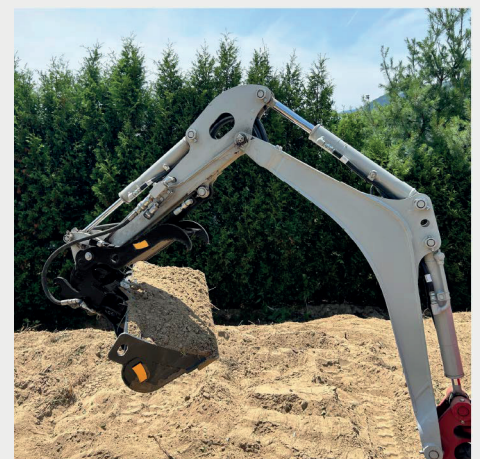
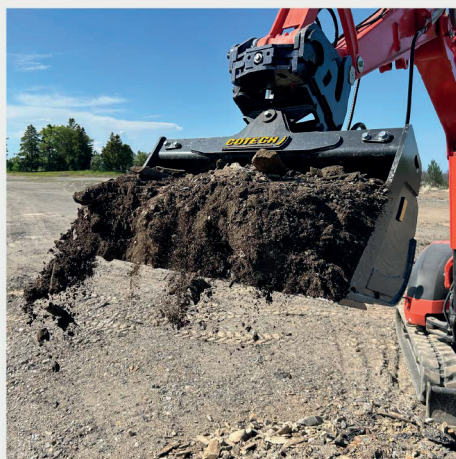
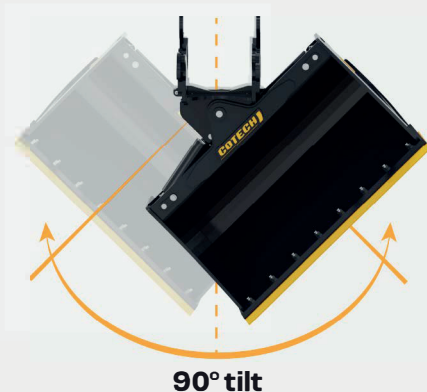
# REVERSIBLE TRENCHING AND DITCHING BUCKETS

- Entirely made of **Hardox® 450 steel**. Lighter and more durable than commercial steel.
- **All of our trenching and ditching buckets are reversible**, enabling front digging under obstacles, drains, or near building foundations. Increases operational versatility and saves time.
- Angled design to maximize raw material extraction and unloading.
- Protected exterior welds on each side to minimize contact with the ground improving durability.
- Fixed CAT-style bucket teeth to enhance productivity. Easily replaceable and universal.
- Reversible bolt-on cutting edge to prevent bucket wear and faster maintenance.
- **Available for 0.5 to 27 tons excavators.**



## REVERSIBLE TILT BUCKETS

- Entirely made of **Hardox® 450 steel**. Lighter and more durable than commercial steel.
- **90-degree pivot angle** (45 degrees on each side). Increases operating versatility regardless of the excavator's position and reduces the support staff required.
- **The reversible Cotech ears** allow front digging under obstacles, tree transplantations or near building foundations.
- Enclosed hydraulic cylinders and a compact central pivot to maximize breakout force.
- **Available for 1 to 27 tons excavators.**



# COUPLERS

## Manual Couplers:

- Compact design to increase excavator's breakout force.
- Specifically designed for each manufacturer make and models.
- Bolted locking key to enable periodic adjustments during operations to reduce downtime.
- Universal coupling of attachments.
- Available for 0.5 to 27 tons excavators.



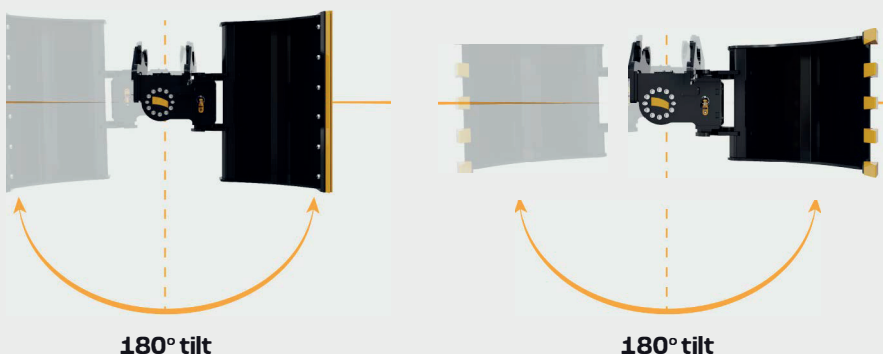
## Hydraulic Coupler Conversion Kits:

- Fast installation designed to respect each OEM make and model specifications.
- Safest coupler of the industry (ISO 13031 safety standard):
  - 1 - Two-step locking system.
  - 2 - Control box with audible alarm.
  - 3 - Maximum locking delay before automatic retraction of the locking key.
  - 4 - The control box reads the excavator's voltage to ensure it's operational.
  - 5 - Additional mechanical locking on the cylinder as precaution against hydraulic hose failure.
  - 6 - The hydraulic coupler system continuously sends a hydraulic pressure to allow the locking key to maintain its position.
- Possibility to switch from hydraulic to manual mode at any time.
- Available for 3 to 27 tons excavators.



## Tilt Actuator Couplers:

- 180-degree pivot angle (90 degrees on each side).
- Enables to tilt all of your Cotech excavator attachments which increases productivity and uptime.
- Compatible with the reversible Cotech ears of our trenching and ditching buckets.
- Available for 5 to 10 tons excavators.





# ADJUSTABLE HYDRAULIC THUMBS

- Entirely made of Hardox® 450 steel. Lighter and more durable than commercial steel.
- Bolt-on adjustable thumb length according to bucket size and operator preference. Improves operation versatility.
- Adjustable thumb stopper to prevent damage to the cylinder. Smoother thumb closure and increased durability.
- Optional bolt-on thumb widening kit to increase grapple strength.
- Available for 3 to 27 tons excavators.



## SPECIALISED ATTACHMENTS

### DRAINAGE BUCKETS



### RAKES



### RIPPERS



### ASPHALT CUTTERS



### TILT GRADING BEAMS



### BROOMS



89, Villeray Street, L'Isle-Verte

1 800 898-4440

[www.cotech.ca](http://www.cotech.ca)

EXCAVATION  
ATTACHMENTS

BUCKETS

THUMBS

COUPLERS